

### 3. First use

Is running the Inspectmate software the first time (for example when the application was installed on a new computer) following the next steps to ensure a reliable device detection.

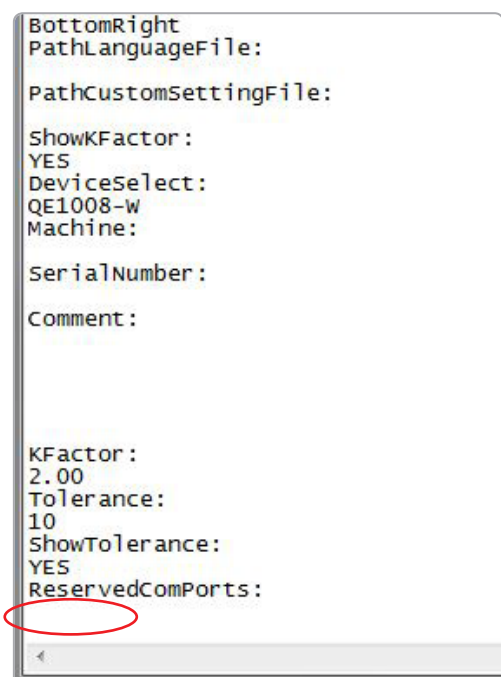
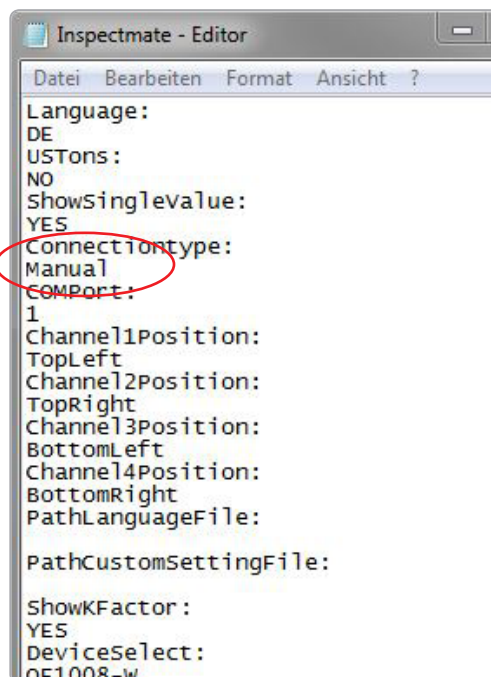
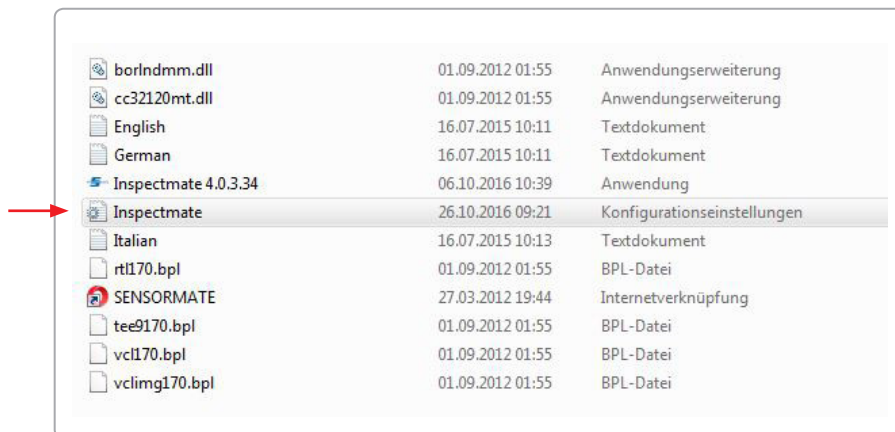
#### 1. Configuration settings:

The configuration file should be accord the factory settings.

Particular: - Setting „Connectiontype“: Should be set to manual.

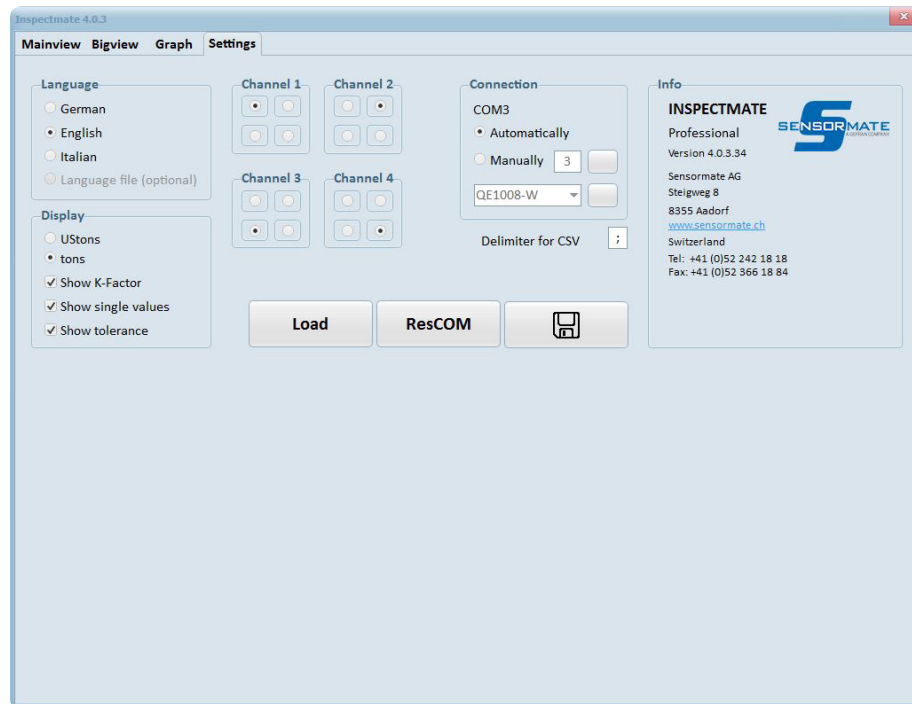
- Setting „ReservedComPorts“: The line underneath should be empty.

(If the setting „Connectiontype:“ is at the first use set with „Auto“, it can happen in very rare cases that the program crashes.)



2. The device which uses the Inspectmate software must be disconnected.

3. Go to „Settings“ in the application.



4. Press the button „ResCOM“.

5. Connect the device that would be use with Inspectmate.

6. Start the scan automatically.

7. Go back to the mainview. The mainview need a few seconds to be ready for measurement.

### Explanation

By pressing the button „ResCOM“ all the used COM port's of the computer will be ignor by Inspectmate for future. This ensure a reliable device detection by Inspectmate when connect a device. This COM registration affects only the Inspectmate software and no other programs on the computer.

(For example: A USB port is a COM port.)